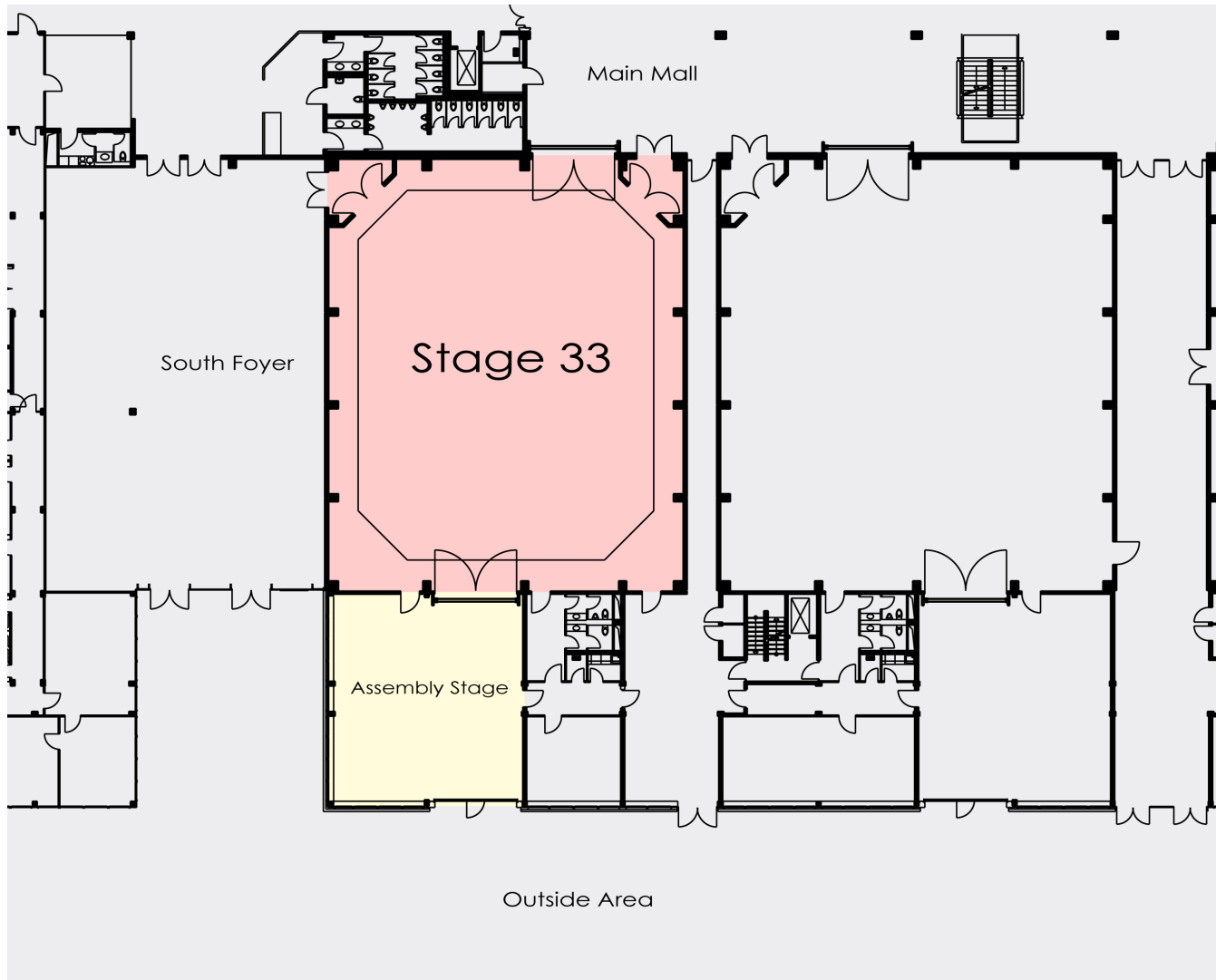


Coloneum Stage 33



Dimensions

Length	86.71 ft (26.43 m)
Width	71.19 ft (21.70 m)
Total Area	6,172.88 sq ft (567.40 m ²)

Operating Area

Length	74.80 ft (22.80 m)
Width	59.38 ft (18.10 m)
Total Area	4,441.62 sq ft (412.68 m ²)

Height

Height to Ceiling	22.97 ft (7.00 m)
Height to Grid	21.33 ft (6.50 m)

