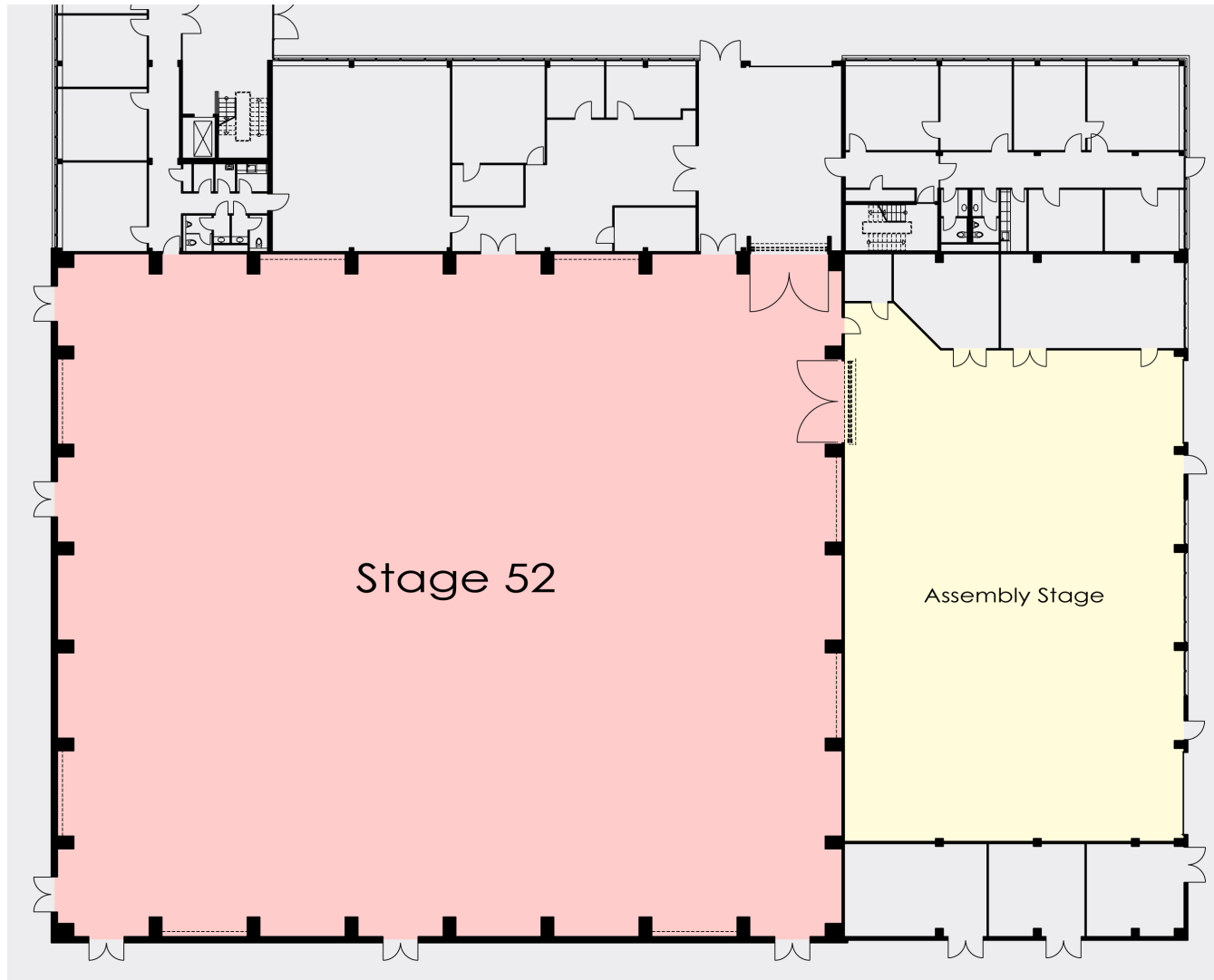


# Coloneum Stage 52



## Dimensions

Length	157.57 ft (48.03 m)
Width	136.97 ft (41.75 m)
Total Area	21,582.36 sq ft (1,977.80 m <sup>2</sup> )

## Operating Area

Length	143.04 ft (43.60 m)
Width	121.22 ft (36.95 m)
Total Area	17,339.31 sq ft (1,611.02 m <sup>2</sup> )

## Height

Height to Grid	75.46 ft (23.00 m)
Height to Ceiling	85.30 ft (26.00 m)

## Water Tank

Length	39.37 ft (12.00 m)
Width	19.68 ft (6.00 m)
Depth	12.47 ft (3.80 m)

